

Solid Waste Management in Manitoba

.....

Cory Graham, P. Eng.
Environmental Approvals Branch
Manitoba Sustainable Development



Outline

- Background
- Legislation
- Permits and Licences
- Questions

Background

- The Environment Act E125
 - Waste Management Facilities Regulation 37/2016



Waste Management Facilities Regulation

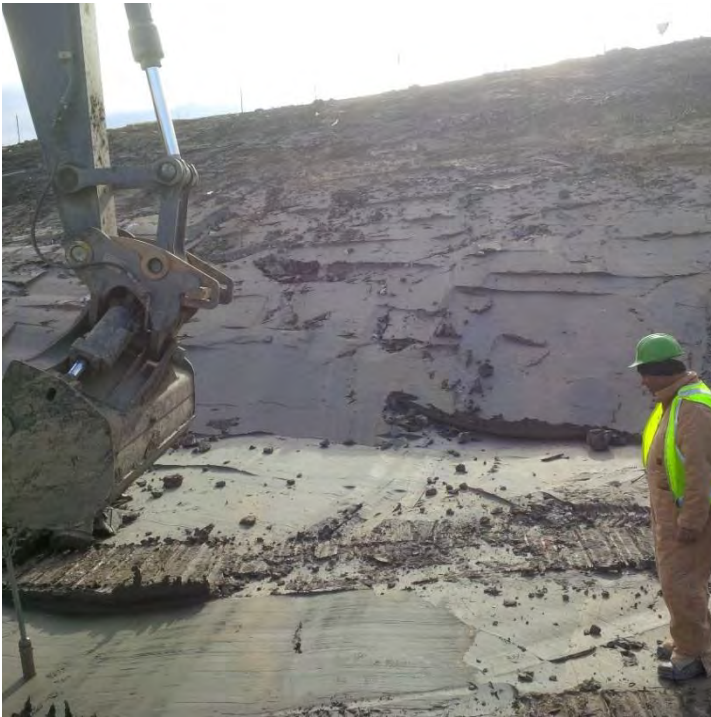
- Came into force July 1, 2016
- Strengthened environmental protection
- Updated provisions (20+ years since last changed)
- Addresses all solid waste management facilities
- Defines technical and environmental requirements for development, operation, monitoring, and reporting

Waste Management Facility

- A waste management facility (WMF) is:
 - Landfill
 - Transfer Station
 - Composting Facility
 - Material Recovery Facility
 - Remote Seasonal Facility



Landfill



Approximately 200 Sites in Manitoba

Transfer Station



Increasing number of landfills converting to transfer stations (approximately 90 Transfer Stations in MB).

Compost Facility



7 licenced Commercial Composting Facilities
4 permitted Compost Facilities
Many WMF permits include composting

MRF



‘Material recovery facility’ means a facility where comingled recyclable materials are separated, processed or where source separated recyclable materials are processed for sale

10 MRF currently Permitted

WDG Classifications

- Tonnage based classifications:
 - Class 1 are large municipal, private and commercial landfills
 - Class 2 are landfills that do not meet the requirements of a Class 1 or a Class 3 WDG
 - Class 3 are all existing Class 3 WDG under the former regulation

Requirements

- Permits issued for 5 years
- Phase in for permit renewals
- Mandatory operator certification for landfills
- Increased operating, reporting and closure requirements

Deadline to Apply for New Permit

Waste Management Facility	Deadline to Apply for Permit
Accepts between 1,001 - 5,000 tonnes in a year	2 years (July 2018)
Accepts between 501 tonnes - 1,000 tonnes in a year	3 years (July 2019)
Accepts between 0 - 500 tonnes in a year	4 years (July 2020)

WMF Regulation

- Who is impacted?
 - Municipalities
 - ANA Communities
 - Privately owned facilities (compost, MRF's)
 - MSD owned facilities (Parks)
 - Remote/Seasonal use facilities (fly in camps)

Environment Act Licences

- New EAL:
 - Apply for a licence and go through the review process as prescribed by regulation
 - \$7,500 application fee
- Existing EAL:
 - Will remain in effect
 - NOA may be required
 - \$500 NOA fee



Permit Process

- Obtain Permit to operate
- Submit information required in Schedule A



Permit / EAL Process

- Submit complete application
- Reviewed by department staff
- Public and internal TAC review period (licence)
- Permit or EAL is issued to the proponent
- Environment Officers ensure ongoing compliance with the Permit and Regulation

Other Activities at WMF

- Recycling areas
- Burn area
- Composting
- Soil Treatment
- Landfill Gas Systems
- Hazardous Waste Collection

Hazardous Wastes

- Licence/Order under Dangerous Goods Handling and Transportation Act
- Used Oil Collection
- Other HHW materials
- Notice of Alteration to licence (no fee)



Questions?

For more information, please contact:

Environmental Approvals Branch

Manitoba Sustainable Development

1007 Century Street Winnipeg, Manitoba R3H 0W4

solidwaste@gov.mb.ca

Cory Graham

T: (204) 250-7645 cory.graham@gov.mb.ca