

Solid Waste in Municipality of Clanwilliam-Erickson and Rolling River First Nation



USING THE POWER OF RELATIONSHIPS AND
COOPERATION TO SOLVE REGIONAL
PROBLEMS

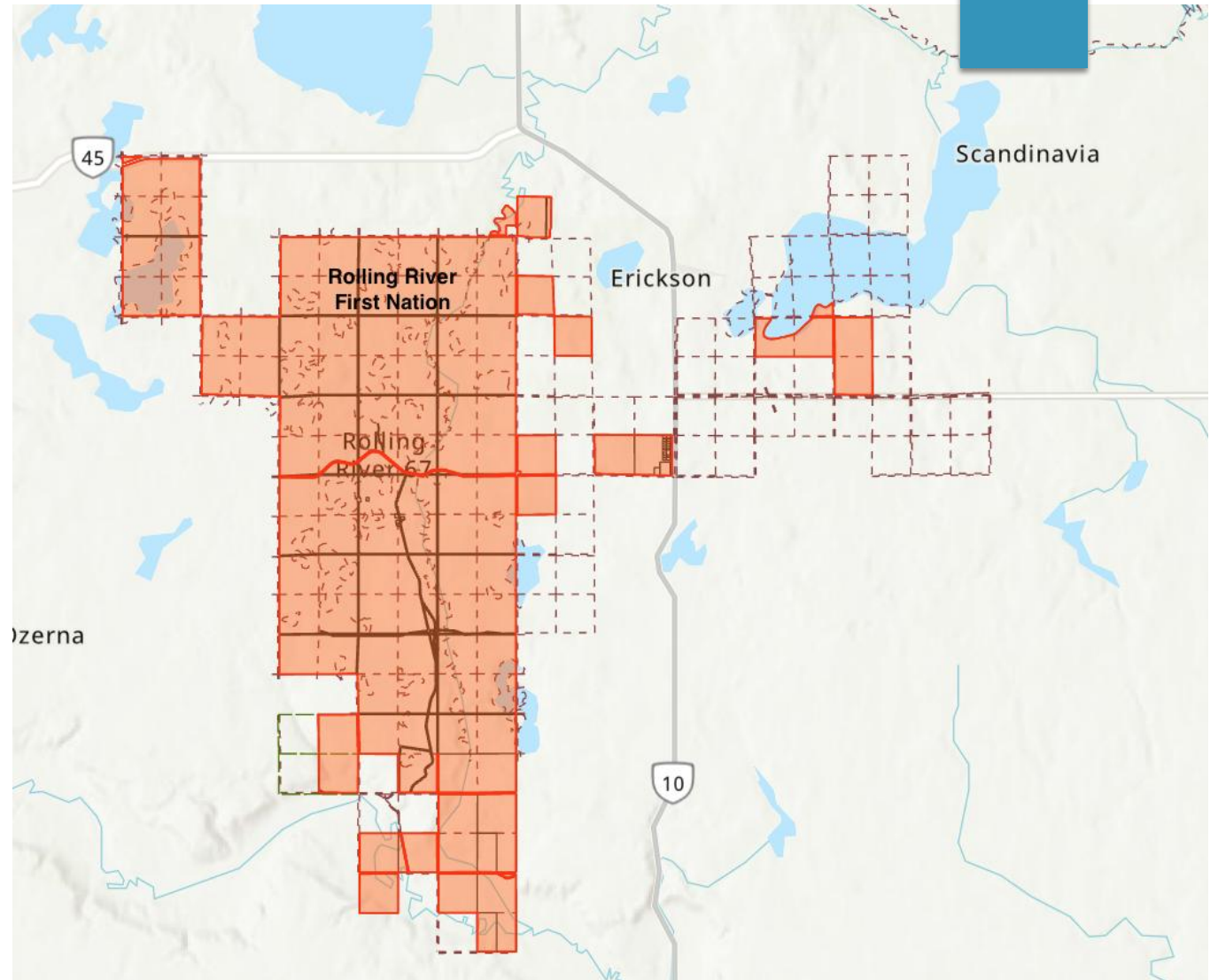


Outline

- ▶ Relationship-building - finding regional solutions together.
- ▶ How Clanwilliam-Erickson built a solid waste transfer station with Rolling River First Nation (RRFN).
- ▶ Setbacks along the way and how we overcame them.
- ▶ Where do we go from here?

Regional Cooperation makes Sense

- ▶ Rolling River First Nation is adjacent to Municipality of Clanwilliam-Erickson (MCE).
- ▶ 2.5 km from community of Erickson.
- ▶ Many shared services.

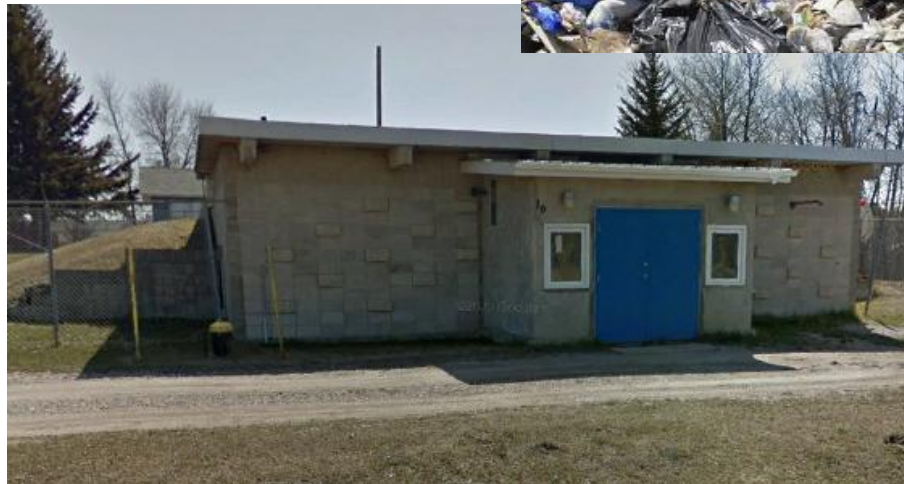


Building relationships – it hasn't always been easy!

- ▶ FCM's Community Infrastructure Partnership Project (CIPP) – 2013
 - ▶ Facilitated meetings between municipal and First Nation councils.
 - ▶ Town of Erickson, RM of Clanwilliam, Rolling River First Nation.
- ▶ Support from INAC and ISC
- ▶ Goal was to identify areas where cooperation on infrastructure projects between Indigenous and non-Indigenous communities could be pursued.

Common Issues – the Low-Hanging Fruit

- ▶ Solid Waste and Recycling
- ▶ Sewage
- ▶ Water Treatment



Solid Waste: Priority One

- ▶ Environmental protection
- ▶ Get solid waste off reserve
- ▶ Regional cooperation and economies of scale – reduce per capita operating costs

These are all priorities of Rolling River First Nation, and of Indigenous Services Canada (ISC). This allowed a generous funding arrangement.

Additional Municipal Priority: compliance with 2016 Solid Waste Regulation.

Additional Partners

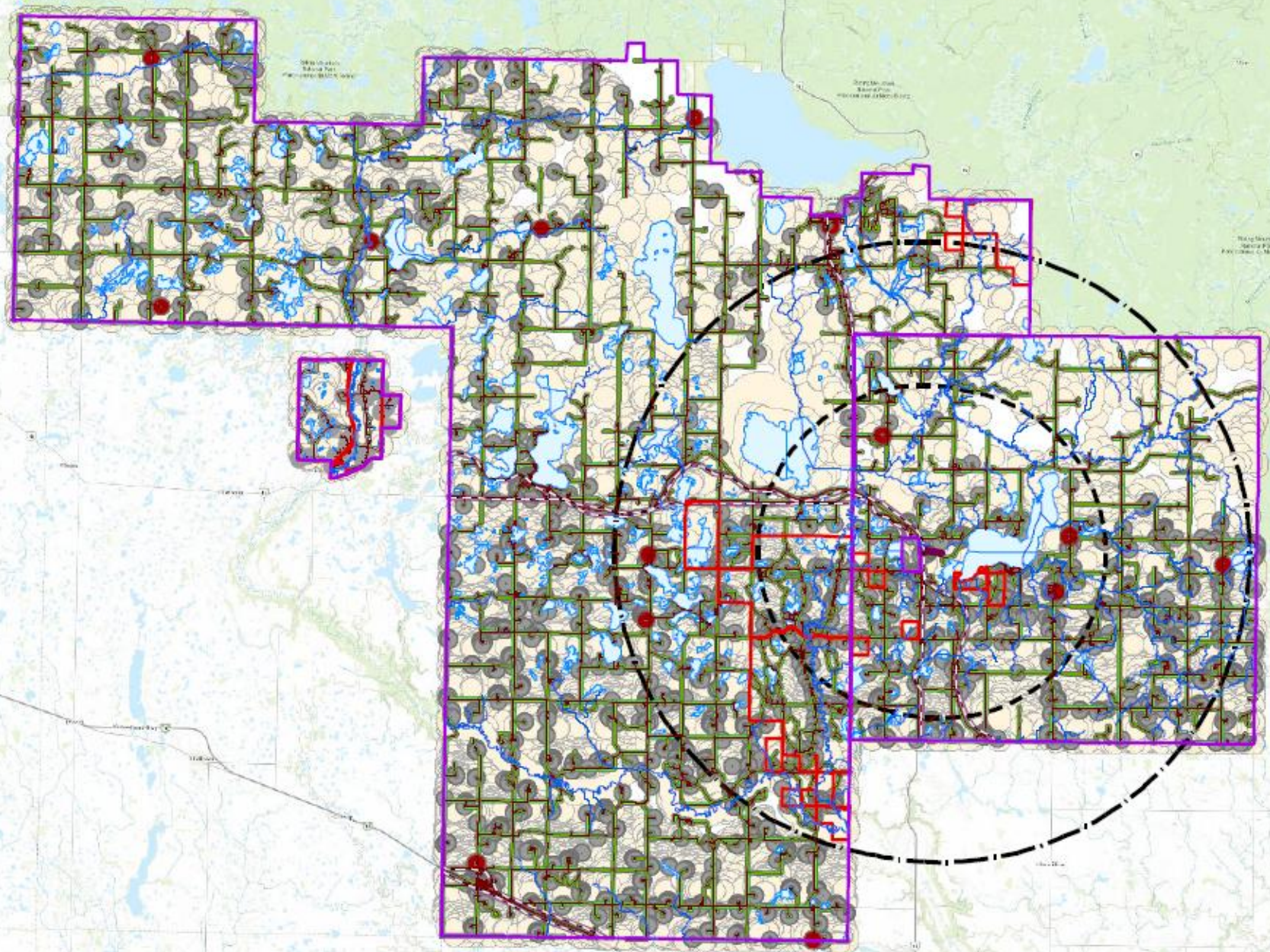
- ▶ Additional entities were invited to join the process, to improve economies of scale.
 - ▶ Municipality of Harrison Park
 - ▶ Keeseekoowenin First Nation
 - ▶ Riding Mountain National Park
- ▶ This group became known as “Four Winds” – two municipalities and two First Nations.

Feasibility Study initiated by ISC

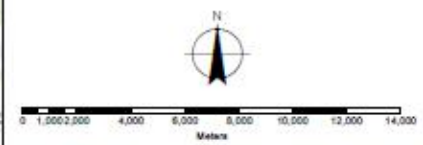
- ▶ Goals included environmental protection, high level of service, keeping jobs in the region, cost effectiveness, and minimizing traffic and impact on roads.
- ▶ Examined options including regional landfill, expanding existing landfill, exporting waste, incineration, and others.

Regional Landfill Proposed

- ▶ Looking at all options, a new Class 2 regional landfill was proposed, with a network of transfer stations in the region. Existing landfills would be closed.
- ▶ The only locations meeting siting criteria were located in Municipality of Harrison Park.
- ▶ One site was selected based on the landowner being willing to sell, and central proximity to all communities.



- Legend**
- Municipal Boundary
 - Reserve Boundary
 - Railway
 - Airport Strip
 - Roadway
 - 8km Buffer from Airport
 - 15km Buffer from Airport
 - Surface Water (Open Water)
 - Cemetery
 - Building
 - 400m Buffer from Cemetery
 - 100m Buffer from Railway
 - 100m Buffer from Public Road
 - 400m Buffer from Building
 - 500m Buffer from Surface Water



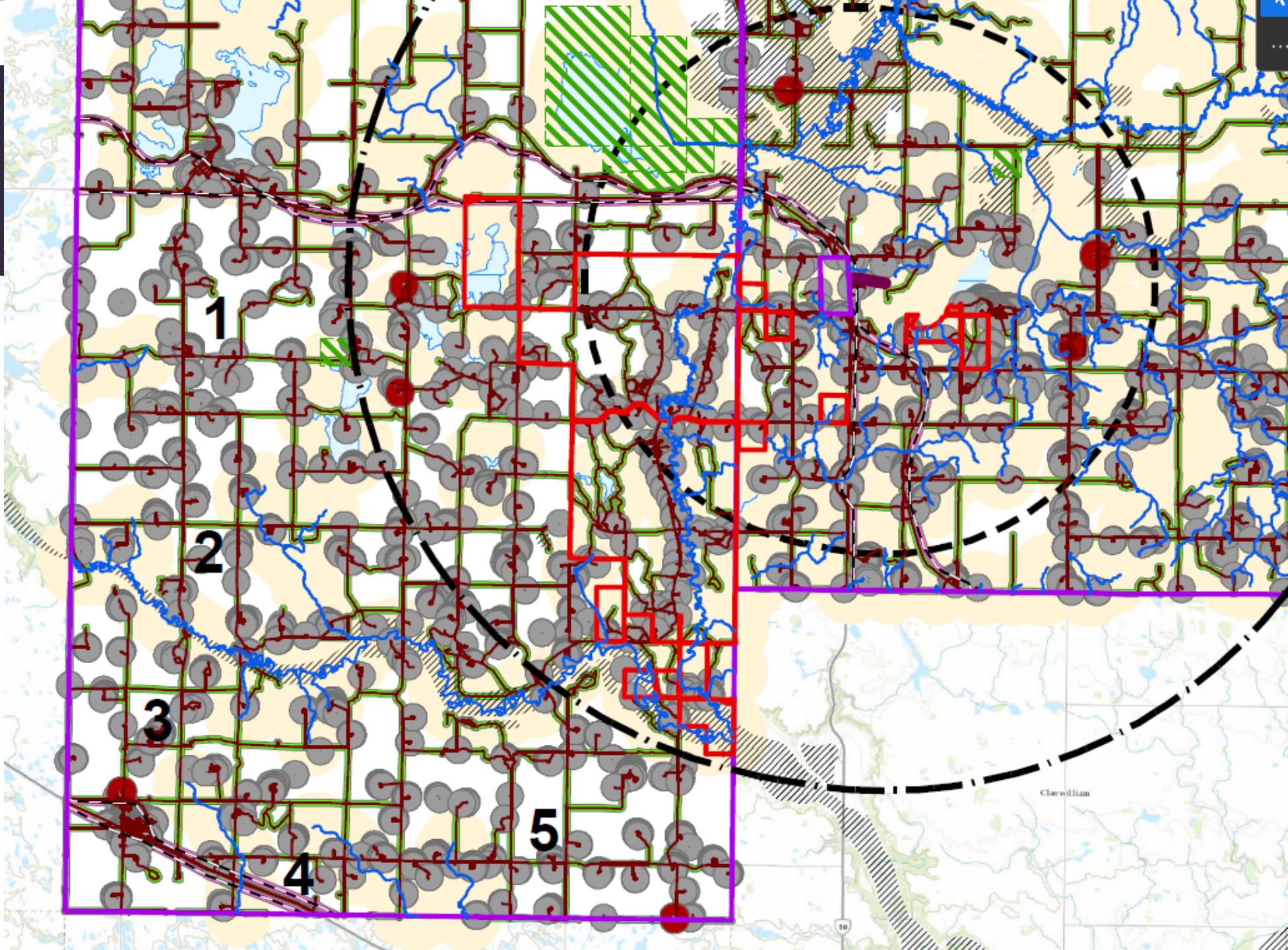
NEEGAN BURNSIDE

Client
RSWARFIC
 SOLID WASTE MANAGEMENT OPTIONS
 FEASIBILITY STUDY

Figure Title
CONSTRAINTS MAPPING - B

Drawn	Checked	Date	Figure No.
SK	KH	December 19, 2016	6
Scale	Project No.		
1:200,000	300039698		

Sources: Esri, HERE, DeLorme, Intermap, increment P Corp., GEBCO, USGS, FAO, NPS, NRCAN, GeoBase, IGN, Kadaster NL, Ordnance Survey, Esri Japan, METI, Esri China (Hong Kong), swisstopo, MapmyIndia, ©OpenStreetMap contributors, and the GIS User Community



Local Opposition to Location of new Landfill

- ▶ When the proposed location went public, the outcry was significant.
- ▶ Election issue:
 - ▶ Harrison Park – 6/7 councillors lost their seats in 2018.
 - ▶ Clanwilliam-Erickson – 5/5 lost seats (likely not related to landfill).
- ▶ Harrison Park formally withdrew from Four Winds in 2019, and the regional landfill was no longer an option.

Starting Over (sort of) in 2019

- ▶ The remaining Four Winds partners expressed that they were onboard to use a transfer station at Clanwilliam-Erickson's landfill site, and export garbage outside the region.
 - ▶ MWM landfill (Souris) selected.
- ▶ A cooperation agreement was revised.
- ▶ ISC provided money for a project coordinator to help speed the process.

Moving along at the pace of government

- ▶ COVID-19 slowed everything down further, and our landfill(s) kept filling up.
- ▶ MCE proposed a new governance model to speed things along, focused on working with RRFN.
 - ▶ Municipality owns the transfer station – no longer a legal partnership.
 - ▶ RRFN gets solid waste off reserve, and does not hold liability of a facility on a former landfill site.
 - ▶ RRFN is a preferred customer, capital contributions will be recognized with reduced usage fees.

Cost-sharing

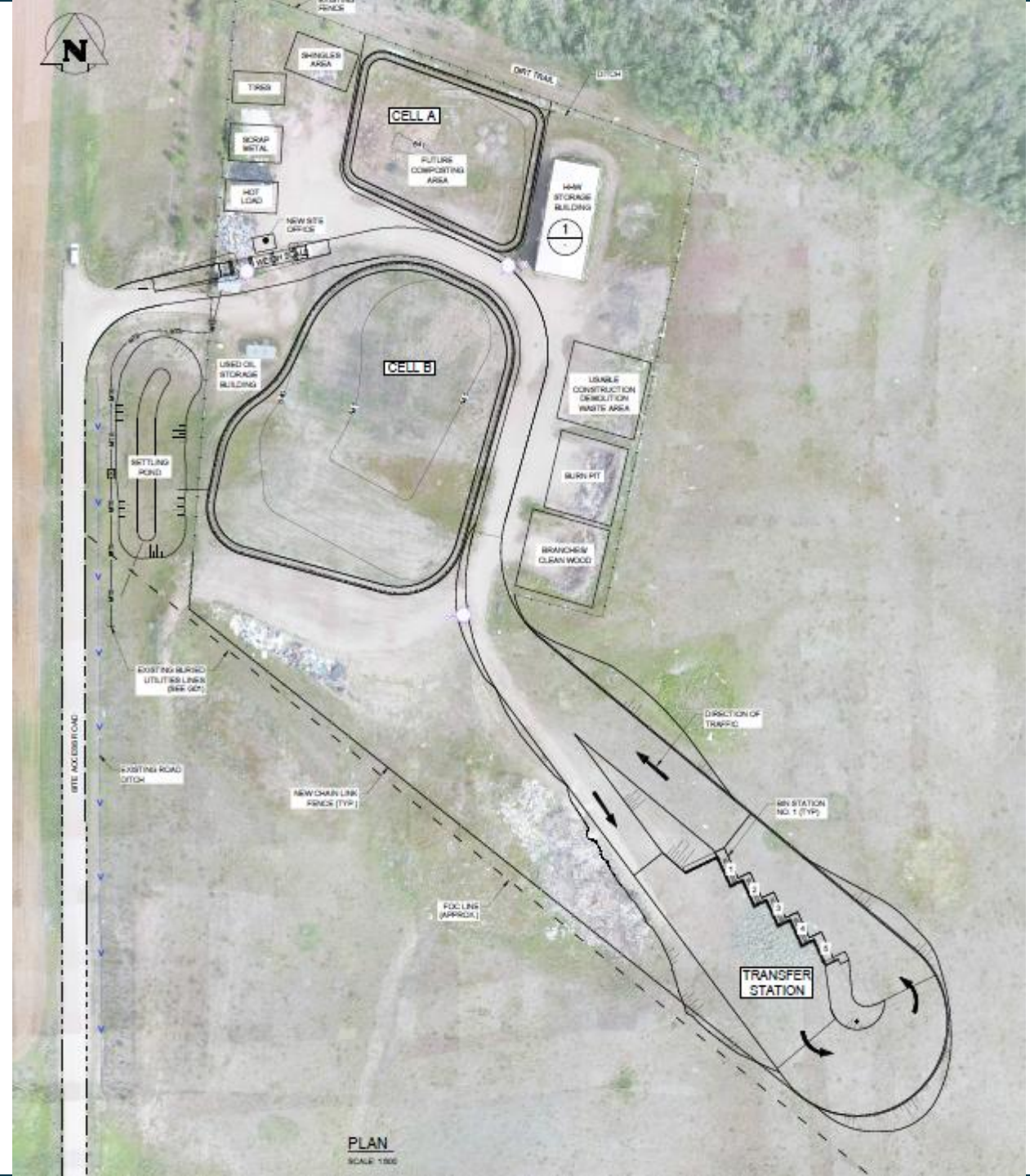
- ▶ MCE provides land, existing infrastructure, administration, and the cost to close the landfill.
- ▶ MCE recognizes RRFN's capital contributions with a credit toward a portion of their site access fees.
- ▶ MCE received a MEDIP grant for the project from Manitoba.
- ▶ RRFN and ISC provided remaining funding needed for transfer station design and construction.

Design and Construction

- ▶ KGS Group selected as project engineers.
- ▶ Accurate HD selected to build.

Transfer Station Design – Plan View

- Retaining wall and bins located southeast of existing landfill, to make use of existing terrain.
- Landfill to be closed and that area used for waste diversion.
- All vehicles weigh in and out.









Waste Diversion

- ▶ Current: community recycle centre (dropoff only), compost pickup, used oil, tires, scrap metal, burn raw wood.
- ▶ Too much recyclable material going in garbage bins.
 - ▶ Pilot curbside pickup project starting soon.
- ▶ Expanding diversion: Household hazardous waste, e-waste

What's Next??

- ▶ ~~Solid Waste~~
 - ▶ Not “done” but getting close.
- ▶ Sewage Treatment improvements.
- ▶ Piped water.

Take-home Messages

- ▶ Solid waste and other infrastructure are only getting more expensive, and small communities can't make it alone. Regional cooperation is essential.
- ▶ Have to keep the needs of your regional partners at top of mind.
- ▶ Working together means their success is your success. Find win-win solutions.
- ▶ Also have to continuously consult with your own community members.

Further Reflections

- ▶ Partnerships between municipalities and First Nations make sense, and are an essential part of reconciliation.
- ▶ There is no clear, established, or formal process towards making these projects happen. This project took many years to navigate, and frequently felt uncertain.
- ▶ Provincial and federal governments have a strong role to play, and should work together to clarify approaches that municipal and First Nations communities can take in order to cooperate on infrastructure.

Thank you!



Questions?