
Winter Road Recycling Project

**A Project of Manitoba Producer
Responsibility Organizations**

Introductions

PRO	Material Accepted
Call2Recycle	Household batteries
Canadian Battery Association (CBA)	Lead acid batteries
Electronic Product Recycling Association (EPRA)	Electronic waste
Health Products Stewardship Association (HPSA)	Unwanted medications, medical sharps
Heating, Refrigeration and Air Conditioning Institute of Canada (HRAI)	Electronic and mercury containing thermostats
Manitoba Association of Resource Recovery Corporations (MARRC)	Used oil and antifreeze
Multi-Material Stewardship Manitoba (MMSM)	Residential packaging and printed paper
Product Care Association (PCA)	Household hazardous waste, paint, CFL lights
Tire Stewardship Manitoba (TSM)	Tires



Background

The Winter Road Project is an annual collaborative project dedicated to reducing landfill waste in northern and remote First Nations communities.

Various Producer Responsibility Organizations (PROs) work together to develop strategies for the removal of program materials from participating communities, such as, printed paper and packaging, tires, household hazardous waste, vehicle and household batteries, electronics, thermostats, sharps, and used oil.

The PROs work together to provide ongoing support, resources, and supplies to participating communities. Transportation and processing services are also arranged for the various program materials. Since this program was established, the group has built ongoing relationships with First Nation and northern communities. These partnerships are vital, as local representatives play a key role in ensuring materials are collected, properly staged and prepared for safe removal.



Background

The Winter Road Recycling Project is an annual collaboration between remote winter road First Nation communities, Producer Responsibility Organizations (PRO's), and Indigenous Services Canada (ISC). Facilitated by the First Nations Waste Minimization Team.

Stewarded and non-stewarded materials are removed.

Stewardship: Material designated under extended producer responsibility. Producers are responsible for managing their designated materials in environmentally responsible ways either through safe disposal, repurposing or recycled into new products.

Non-stewardship: Material that isn't designated under EPR - includes commercial cardboard, white goods, and non-stewarded hazardous waste. This is dependent on ISC funding

The Project is supported/funded by 9 Producer Responsibility Organizations and Indigenous Services Canada.



Background

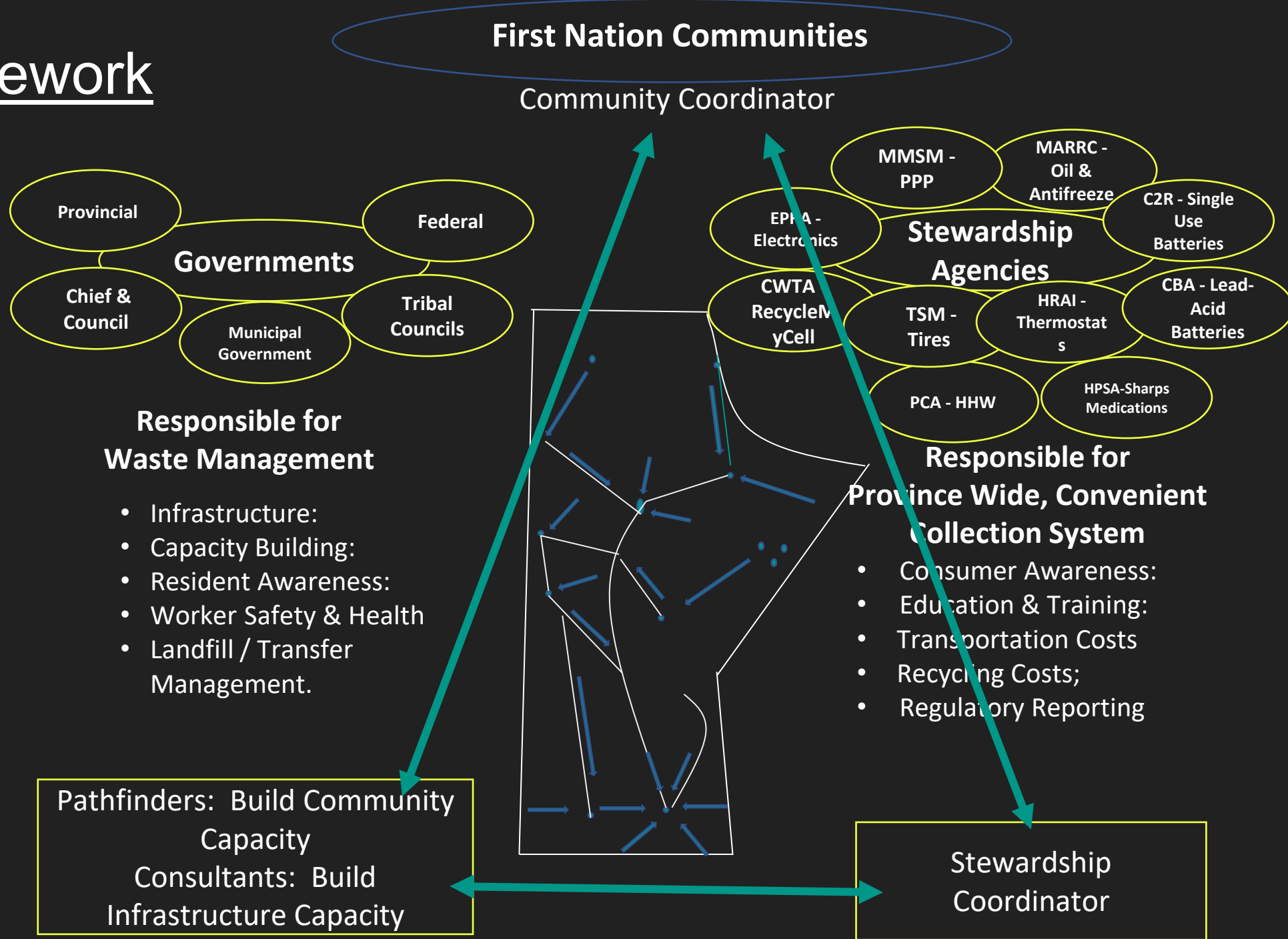
The Winter Road Recycling Project partners with transporters bringing goods and supplies to communities on the winter road. Instead of 'backhauling' empty, waste management crews fill the now empty semi trailers with waste materials they have collected.

Program materials are collected, stored, packed and transported in accordance with the Federal Transportation of Dangerous Goods Act and the Province of Manitoba's Dangerous Goods Handling and Transportation Act.

For the 2024/2025 backhaul season each of the three transporters we worked with was licensed to haul hazardous waste.



Framework



Roles

PRO Programs

- Provide technical support to communities & GAC
- Fund the backhaul of stewarded material
- Provide program specific supplies
- Fund coordinator position

First Nations Waste Minimization

- Onsite support
- Load planning & logistics
- Prepare transport manifests
- Community engagement support

Communities

- Collect, pack, stage, and load materials
- Communicate supply needs - tools, packing materials, PPE, safety supplies
- Expand programs to include more stewarded materials

Indigenous Services Canada

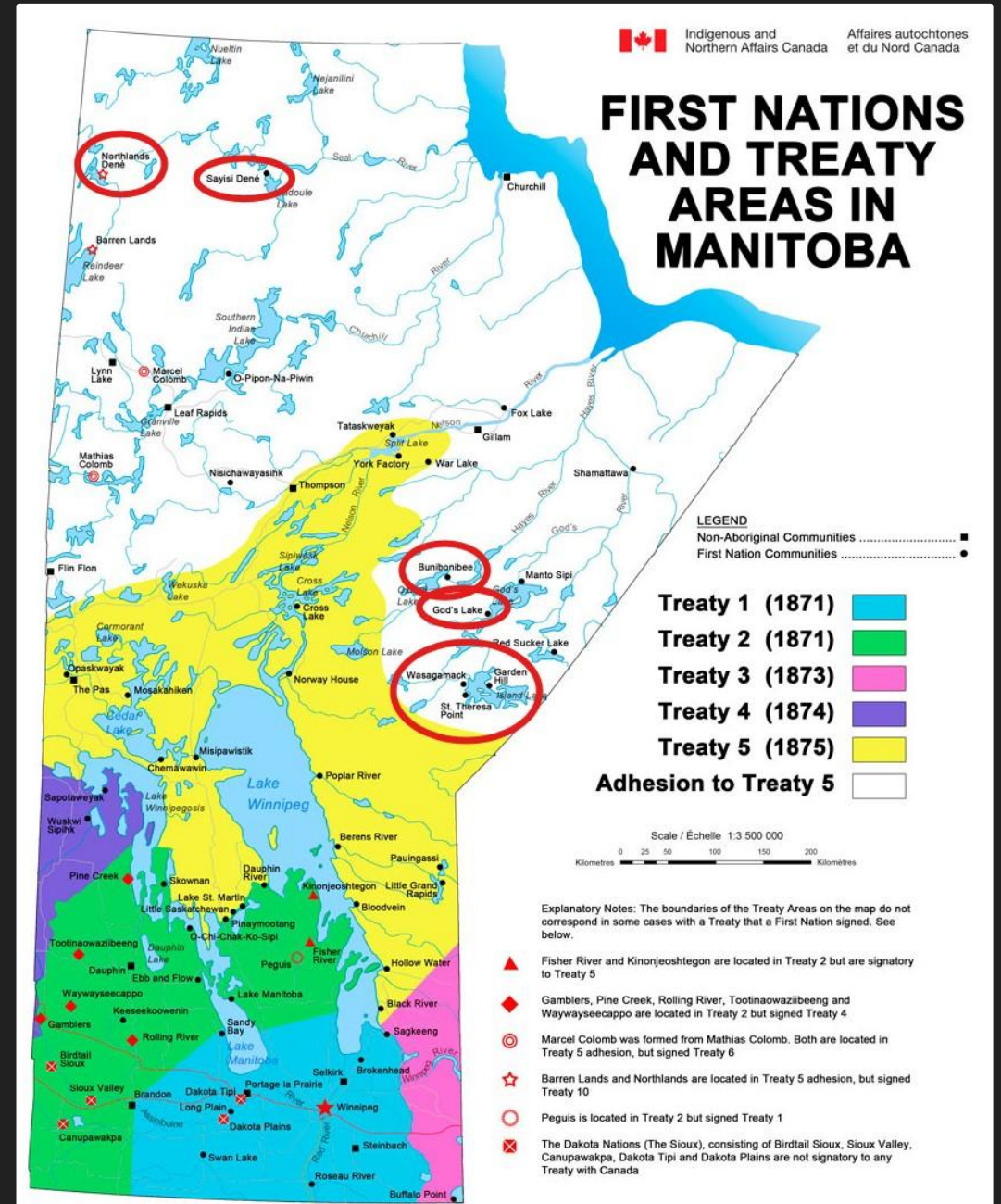
- Fund FNWM travel
- Fund non-stewarded material transport
- Landfill infrastructure / O&M
- Provide technical support

Backhaul Communities

The number of communities that participate in Backhaul varies from year to year. Seven communities participated in the 2025 winter road backhaul project.

- Bunibonibee Cree Nation
- Garden Hill Anisininew Nation
- Gods Lake First Nation
- Northlands Denesuline First Nation
- Sayisi Dene First Nation
- St. Theresa Point Anisininew Nation
- Wasagamack Anisininew Nation

Community partners are determined by community readiness. Past and present efforts to divert recyclable material, staffing levels, access to heavy equipment and other appropriate infrastructure, and support from leadership are all important factors.



Yearly Activities

Spring

- Communities begin to collect material
- Prepare list of supplies and tools needed to package and stage materials

Summer

- Continue collection, begin staging
- Community visits and on site support

Fall

- Staging and inventory of materials ready to be removed
- Begin planning loads and connecting with transporters

Winter

- Second community visit if needed
- Finalize material inventory
- Finalize load plans
- Prepare movement documents, safety marks, and placards
- Coordinate logistics for material backhaul to receiving facilities



Diversion Summary

Year	# of First Nations	Total (53' Trailers)	Stewarded Portion (trailers)	Non-stewarded Portion (trailers)
2019	5	5	5	
2020	3	6	~5.5	~0.5
2021	4	14	~10	~4
2022	4	9	~6	~3
2023	4	9	~4	~5
2024	7	26	~12.5	~13.5

2024/2025 Backhaul Highlights

St. Theresa Point removed 10 pallets of e-waste, and 21 boxes of fluorescent light tubes containing mercury- the most among any community participating in backhaul this year.



St. Theresa Point

Northlands removed a lot of hazardous waste material, including fire extinguishers, aerosols, camp propane cylinders, oil filters and lead acid batteries.



Northlands Denesuline

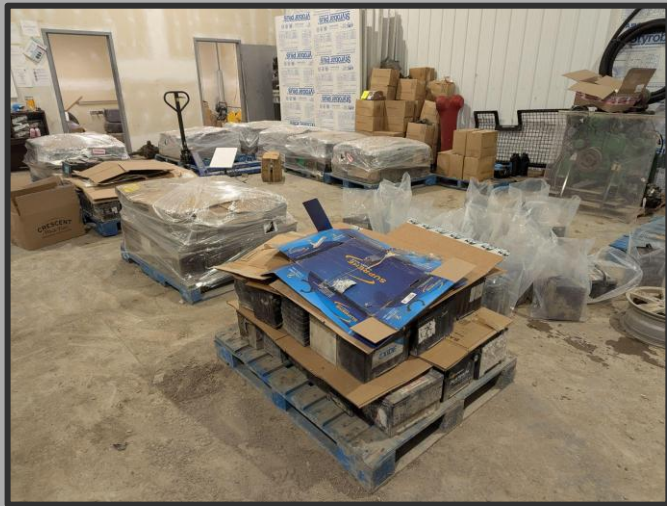
Gods Lake rejoined the project after a few years away. The new Coordinator, operating as a 1 man team, collected enough tires, lead acid batteries and used oil/used oil products to fill a semi trailer!



Gods Lake

2024/2025 Backhaul Highlights

Garden Hill removed 9 pallets of lead acid batteries. That's over 350 vehicle batteries!



Garden Hill

Wasagamack removed 3 semi trailer loads of material, including just under 11,000 kg's of scrap appliances.



Wasagamack

In just 6 months, working part time hours, the two man team in Sayisi Dene collected and prepared enough material to fill two semi trailers!



Sayisi Dene

2024/2025 Backhaul Highlights

Bunibonibee removed 13 semi trailer loads of waste. This is the most loads a community has backhauled in a single season in the history of backhaul!



Bunibonibee

Bunibonibee removed 58 bales of residential recycling totaling just under 20,000 kg's!



Bunibonibee



QUESTIONS?

Amy Smith - First Nations Waste Minimization Program Manager

Email: amy@greenactioncentre.ca

Phone: 204-918-5584